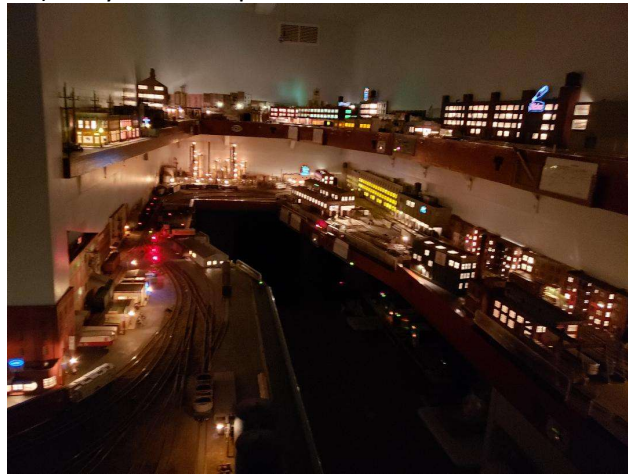


Milwaukee Road Kingsbury Branch (Mike Heine) – Layout Description for NMRA Surfliner 2024



Lakeview Stock Yd & Supreme Meats (Upper Level)



Night Lighting (Looking Toward Helix / Staging)



Morton Salt / Goose Island (Lower Level)



Bensenville Yd (Upr), Galewood & Dunning Yds (Lwr)

**Layout Description:** The layout is a Proto-Freelance version of the Milwaukee's Kingsbury Branch, Goose Island and Evanston Line in Chicago with an added car float operation, waterfront, and city railroading. The time frame is late 1960's in the summer. The layout is indicative of the Chicago area, Kingsbury, Stockyards and breweries.

The railroad is 170 sq. ft. double deck, "L" shaped. There are 41 industries with 166 spots, 90 turnouts and 6 crossings. A helix and staging yards are in a separate room. Scenery is about 80% finished.

Electrical control is Digitrax DCC and uses JMRI for operations.

Ops Sessions are relaxed and run approximately 4 hrs.

**Continued on next page.**

**Operations:**

The entire layout is within yard limits. There is an Employee Time Table (which guests are allowed to keep). There are three crew positions. Each crew member takes 1 of 12 jobs, completes a job, then takes the next available job.

For each job, the crew member functions as a Yard Master, Engineer, and Train Crew. Each crew member is responsible for all transfer moves between zones. Trains include a locomotive, 4 to 12 cars and a caboose. A crew member will typically pick up his/her train from one the 3 staging yards, run to the assigned zone / work area(s), sometimes requiring interaction / coordination with other crew members, perform required pulls and spots, then return to staging / yard. Some jobs will begin at a zone / work area, run to staging and return to the work area.

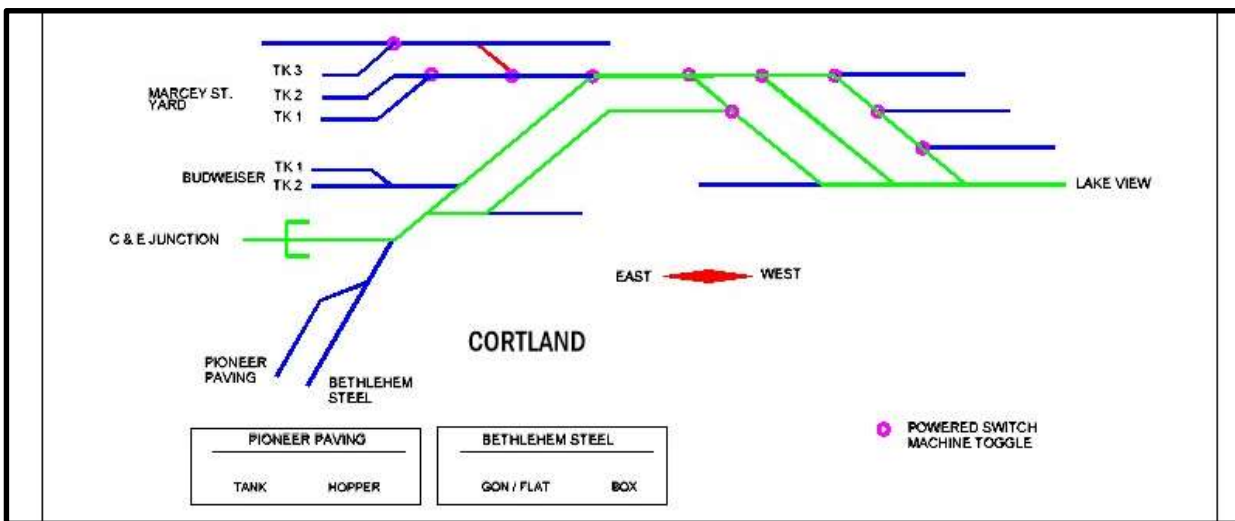
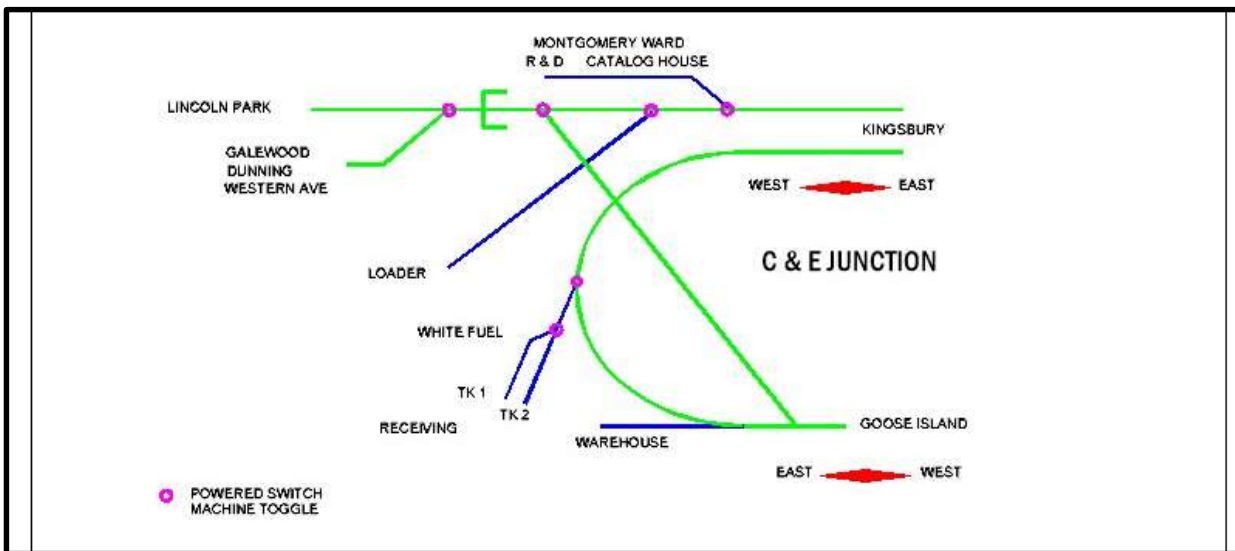
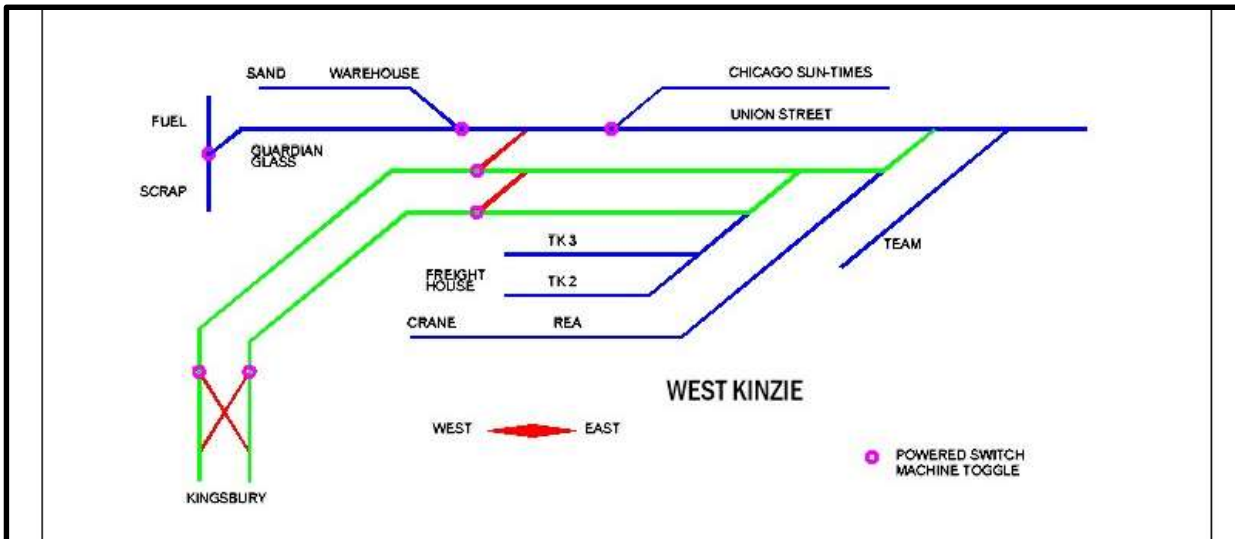
List of 12 jobs (some jobs work more than one zone; some jobs work on both the lower and upper level, requiring the train to transition the helix):

- 1) Goose Island
- 2) Lake View
- 3) Dering
- 4) Kingsbury
- 5) Barge Job
- 6) Lincoln Park
- 7) Western Ave
- 8) IHB Transfer
- 9) Goodyear Transfer
- 10) Marcy Street
- 11) West Kinzie
- 12) C&E Jct

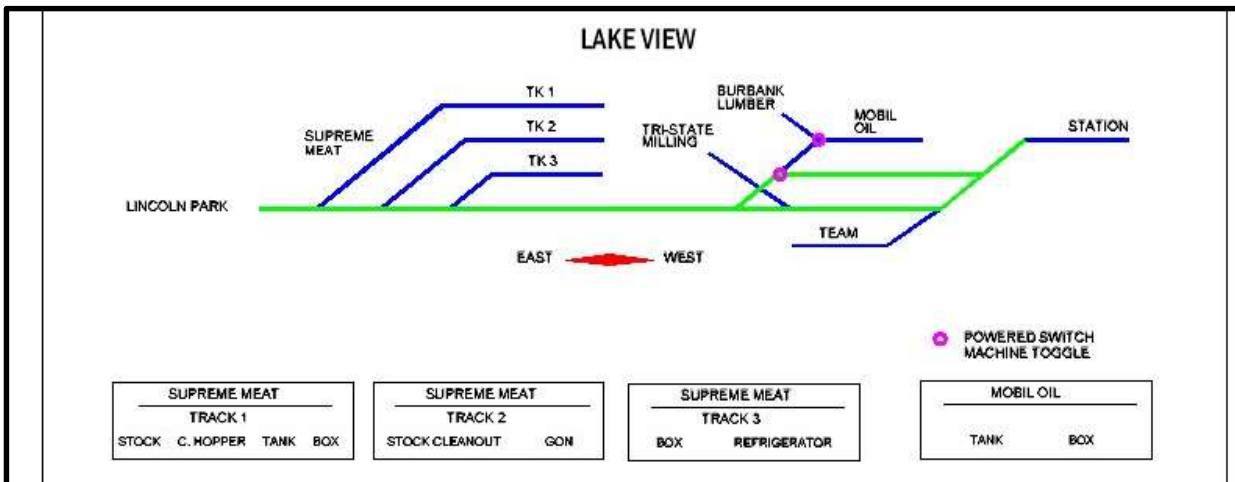
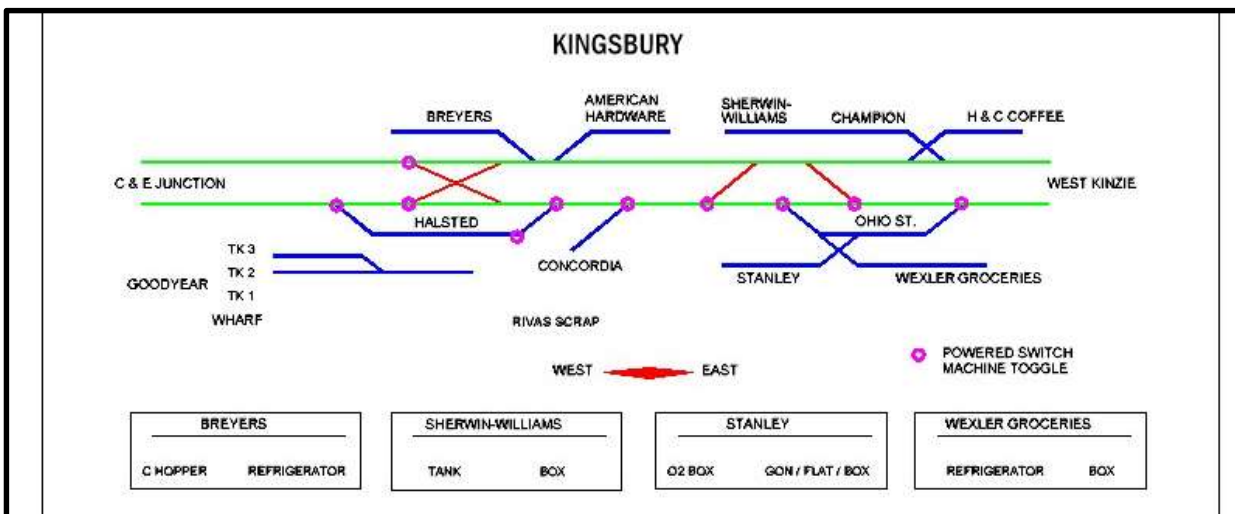
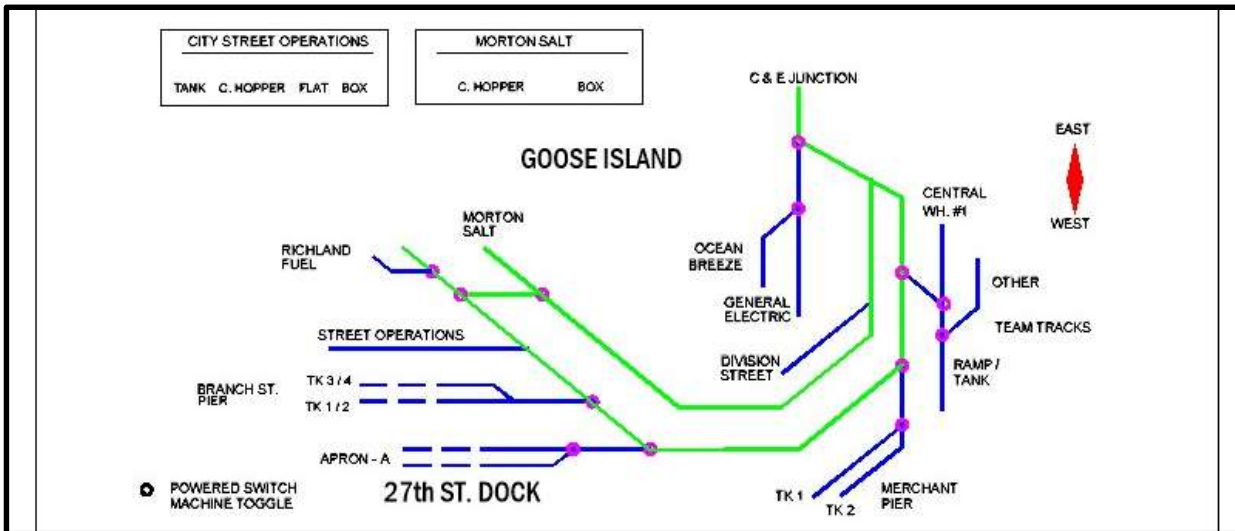
Diagrams of several of the zones / work areas are shown on the subsequent pages.

**Continued on next page.**

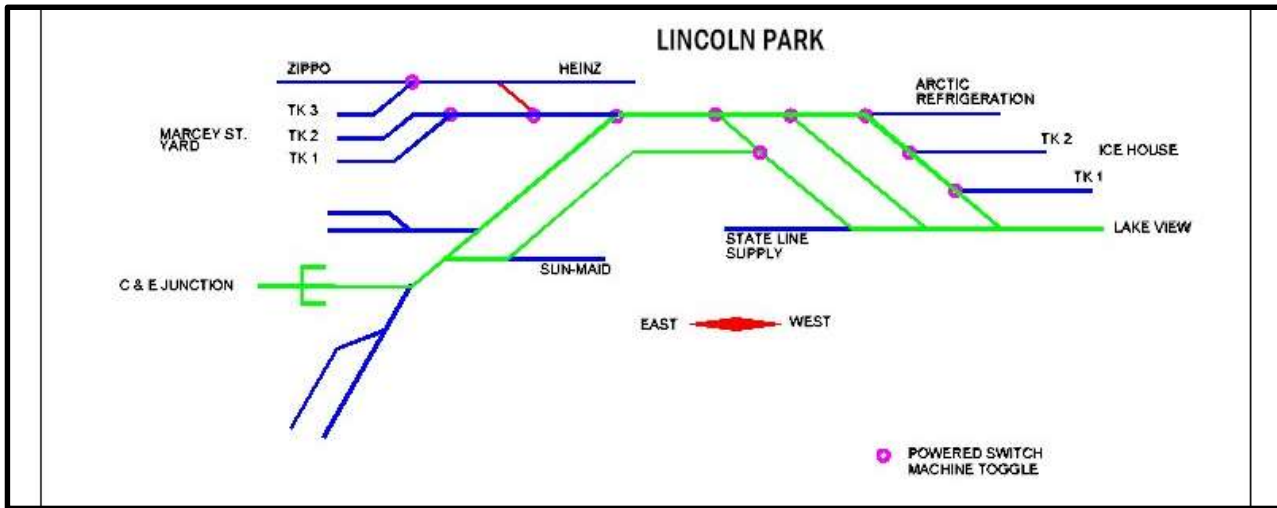
Milwaukee Road Kingsbury Branch (Mike Heine) – Layout Description for NMRA Surfliner 2024



Milwaukee Road Kingsbury Branch (Mike Heine) – Layout Description for NMRA Surfliner 2024



Milwaukee Road Kingsbury Branch (Mike Heine) – Layout Description for NMRA Surfliner 2024



Additional layout pictures:



**Work order for train (WESTERN AVE PATROL)**

1/13/2020 15:30

GENERAL INSTRUCTIONS:

THE MANIFEST OF THE TRAIN IS A LIST OF WORK TO BE DONE, NOT NECESSARILY IN THE ORDER SHOWN.

PULL FORWARD INTO DUNNING YARD AND THEN PUSH BACKWARD INTO C & E JUNCTION.

Work at WESTERN AVE

- NYC 168943 Boxcar from YARD . . . . . -> C & E JUNCTION, WARDS - CATALOG 1
- CIL 3029 Boxcar from YARD . . . . . -> KINGSBURY, CONCORDIA
- NC&SL 22597 Boxcar from YARD . . . . . -> KINGSBURY, SHERWIN WILL. - BOX
- GARE 9105 Reefer from YARD . . . . . -> KINGSBURY, WEXLER GROC. - REF
- REX 6975 Reefer from YARD . . . . . -> KINGSBURY, WEXLER GROC. - REF
- GN 11374 Boxcar from YARD . . . . . -> WEST KINZIE, FREIGHT HOUSE TK 2
- ATSF 12369 Boxcar from YARD . . . . . -> WEST KINZIE, FREIGHT HOUSE TK 2
- AA 1407 Boxcar from YARD . . . . . -> WEST KINZIE, FREIGHT HOUSE TK 3
- ACY 3247 Boxcar from YARD . . . . . -> WEST KINZIE, TEAM
- GM&O 7500 Flatcar from YARD . . . . . -> WEST KINZIE, UNION STREET

Work at C & E JUNCTION

- BM 74706 Boxcar from WARDS - CATALOG 2 -> WESTERN AVE, YARD . . . . .
- MILW 25607 Boxcar from WARDS - CATALOG 3 -> WESTERN AVE, YARD . . . . .
- MILW 23925 Boxcar from WARDS - CATALOG 4 -> WESTERN AVE, YARD . . . . .
- GM&O 5674 Boxcar from WARDS - R & D 2 -> WESTERN AVE, YARD . . . . .
- WRNX 4803 Tank from WHITE FUEL - LOADER -> WESTERN AVE, YARD . . . . . HAZARDOUS

**Continued on next page**

Milwaukee Road Kingsbury Branch (Mike Heine) – Layout Description for NMRA Surfliner 2024

Work at KINGSBURY

DL&W 51969 Boxcar from H & C COFFEE -> WESTERN AVE, YARD . . . . .  
SRLX 21043 Reefer from HALSTED - OTHER -> WESTERN AVE, YARD . . . . .  
AL&S 905 Boxcar from STANLEY - CRANE -> WESTERN AVE, YARD . . . . .  
C&O 21142 Boxcar from WEXLER GROC. - BOX -> WESTERN AVE, YARD . . . . .

Work at WEST KINZIE

AIR 1289 Hopper from TEAM -> WESTERN AVE, YARD . . . . .  
SCL 416235 Hopper from TEAM -> WESTERN AVE, YARD . . . . .

Work at WESTERN AVE

PULL FORWARD INTO DUNNING YARD AND THEN PUSH BACKWARDS INTO WESTERN AVE.

Train terminates in WESTERN AVE